

Pallet Stretch Wrappers

A low-cost, entry level, semi-automatic machine.

Model:

PP-982 Series

PP-982 HP High Profile

*does not include ramp



NEW MODEL!

Electro Mechanical
Brake Stretch with
HMI Touch Screen

PP-982 LP Low Profile



Series Features

- 4,000 lb. Load Capacity
- Photo Eye
- "Easy Thread Design"
- HMI Touch Screen with Programmable Memory.

Semi-Automatic Pallet Stretch Wrapper

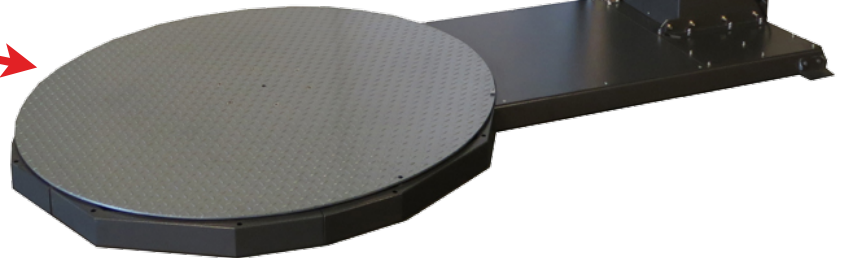
- PLC Control with 12 Program Memory
- On/Off Switch
- Top Wrap Count
- Bottom Wrap Count
- Start/Stop
- Manual/Automatic
- Pause Button
- Film Tension Control
- Turntable Speed
- Film Carriage Speed
- Emergency Stop Switch



Electro-mechanical brake stretch system designed to offer up to 150% film stretch.



Heavy duty chain drive on turntable with 18 sets of double roller turntable supports.



Technical Specifications:

- Production Rate: 30-40 Loads Per Hour
- Power Requirements: 110 Volts, 1 Phase, 15 Amp
- Maximum Load Size: 50" L x 50" W x 85" H
- Maximum Load: 4,000 lbs.
- Turntable: 59" diameter - 3/8" Diamond Plate
- Turntable Drive: 1/2 HP AC Variable Speed 0-12 rpm
- Turntable Drive Method: Heavy Duty Chain ANSI #60
- Turntable Support: Heavy Duty Delrin Roller Assembly
- Film Delivery System: Electro-Mechanical Brake Stretch System
Designed to Stretch Film up to 150%
- Machine Dimensions: 108" L x 59" W x 102" H
- Carriage Elevator: Variable Speed 1/2 hp - Drive Belt
- Controls: PLC Control with 12 Program Memory
- Forklift Portable: Yes
- Photo Eye: Will Automatically Seek Height of Load
- Home Position: Turntable Will Automatically Return to Home Position
- C.E. Approval: Exceeds OSHA Safety Standards
- Film Capacity: All Commercial Stretch Film 20" Wide
- Warranty: 3 Year Limited Warranty
- Shipping Weight: 1,800 lbs.

Optional Features:

- 72" Diameter Turntable
- Tower Extension to 105"
- Base Extension of 24"
- Load Stabilizer - Top Pressure Plate
- Weight Scale Packages

